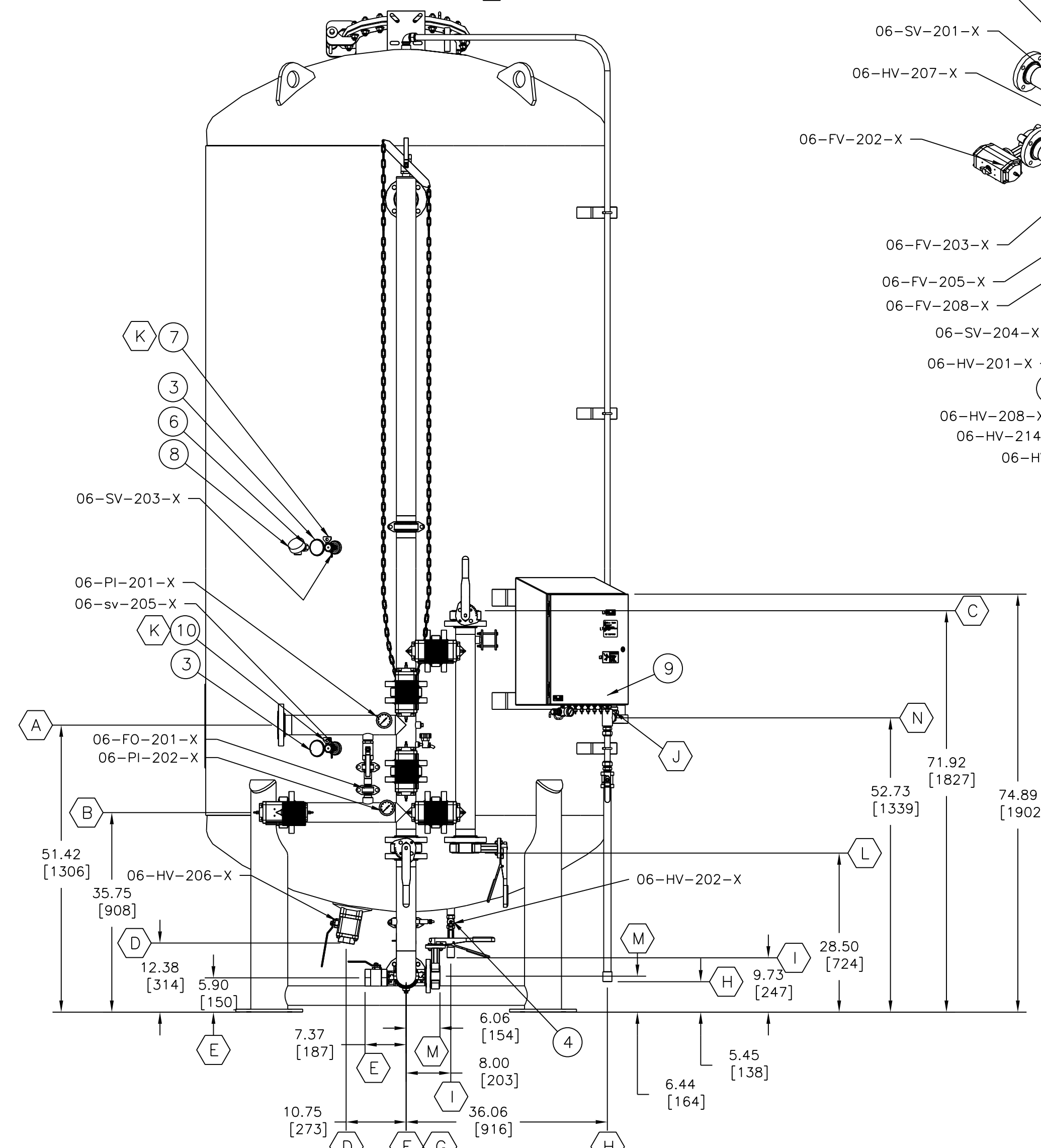
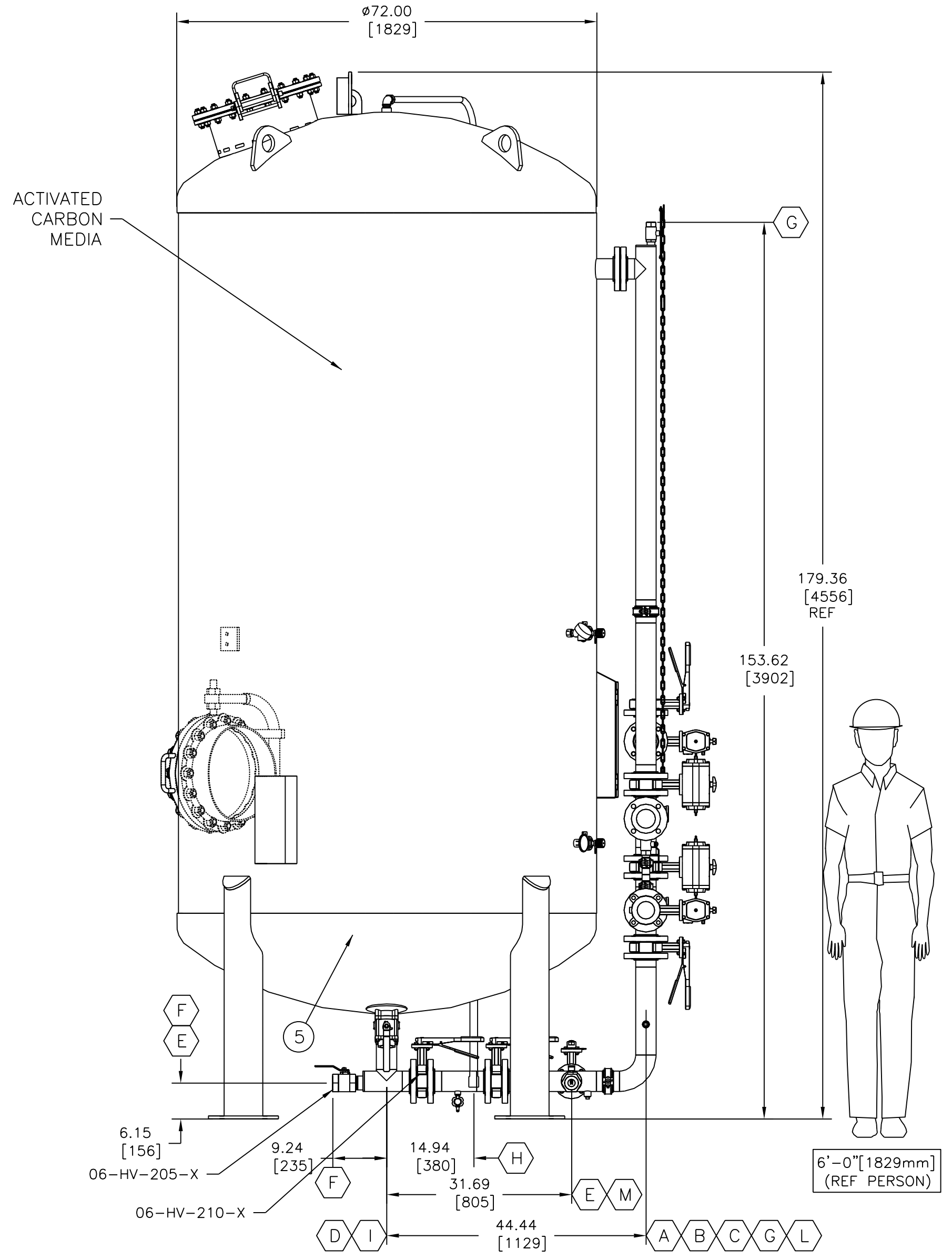
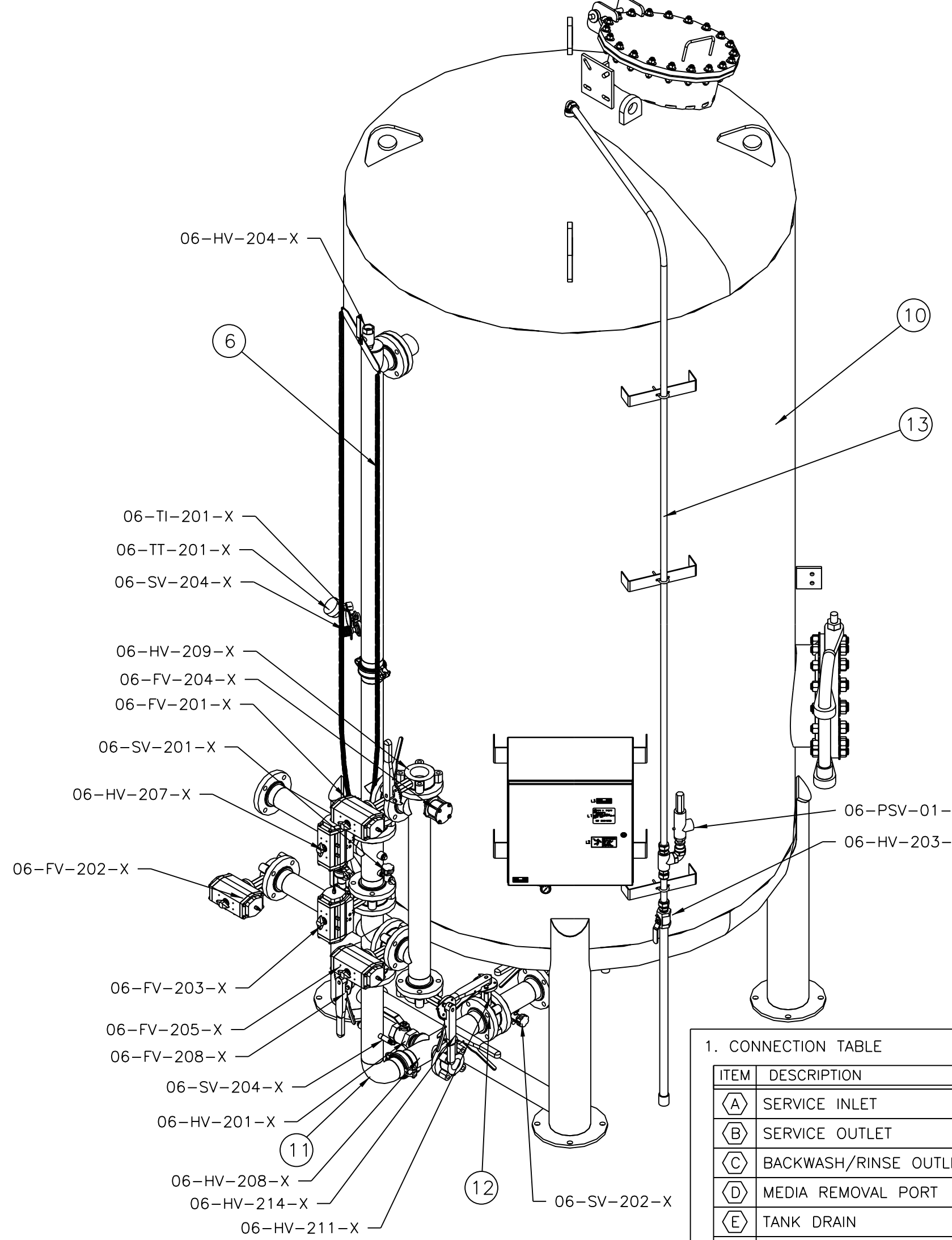
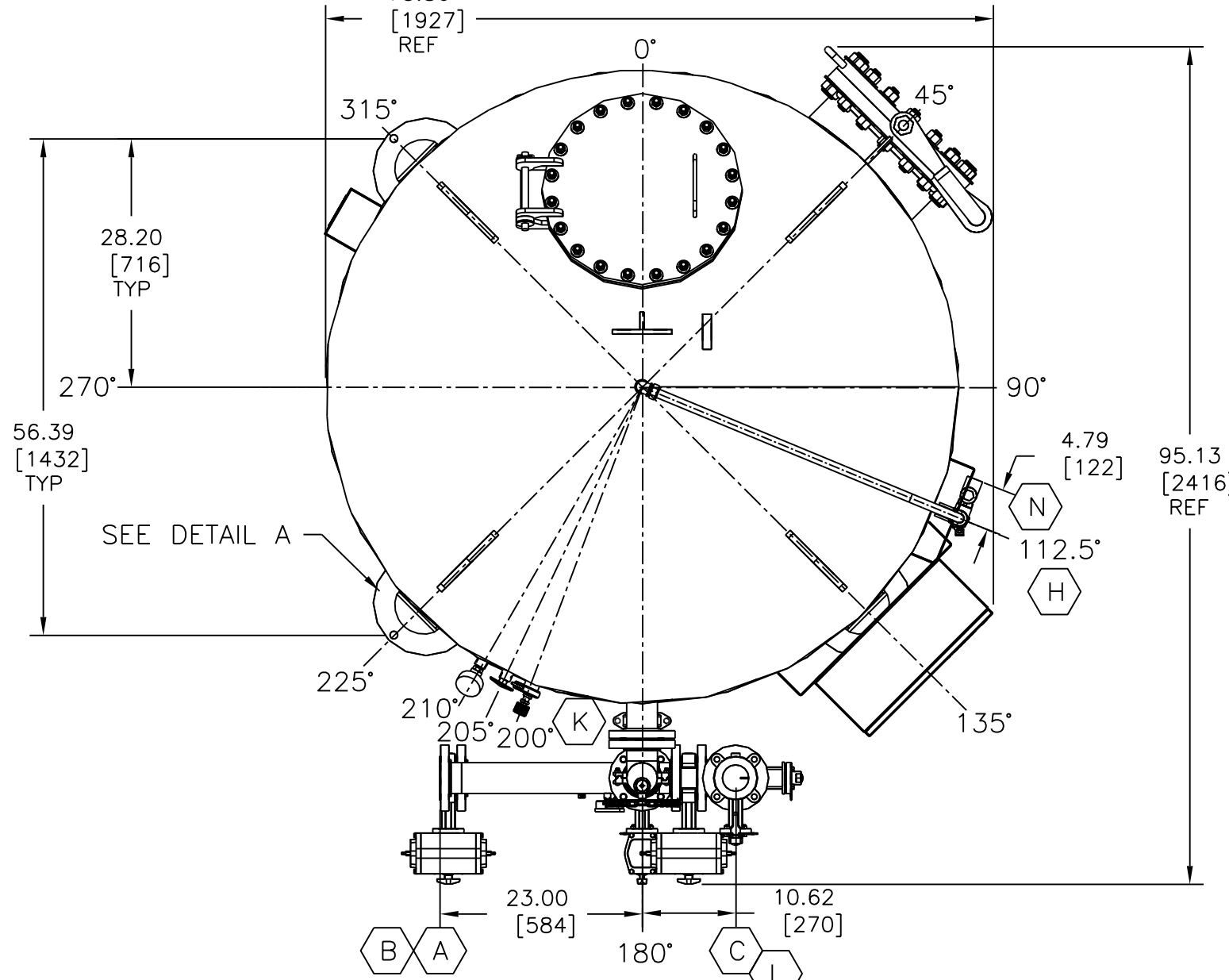
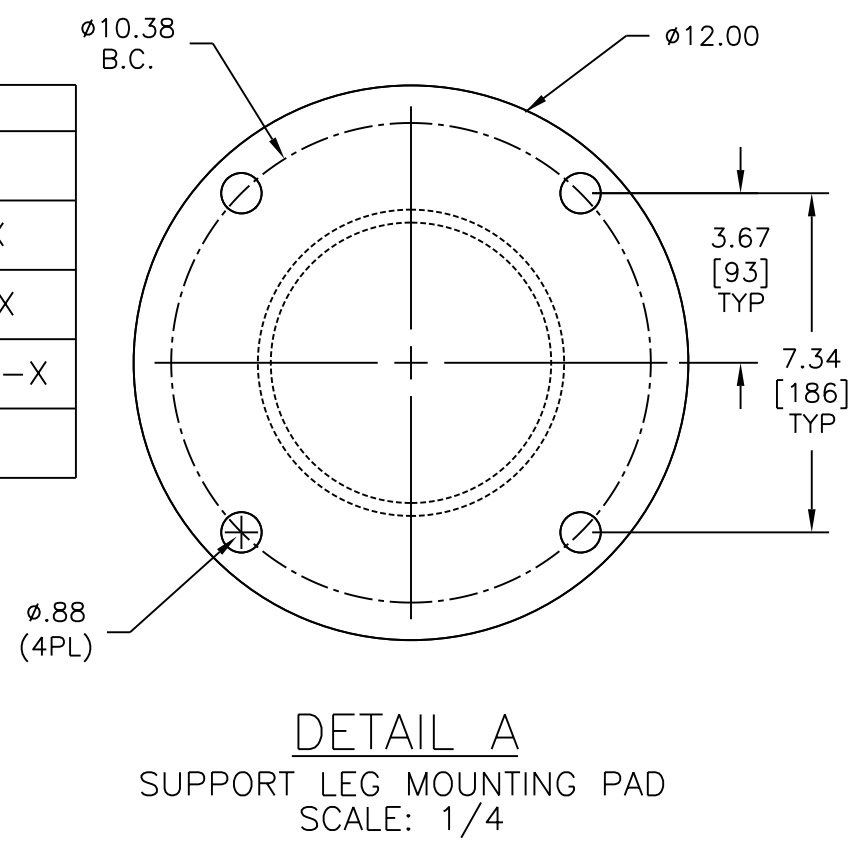


| VALVE NUMBER | DESCRIPTION |
|--------------|-----------------------------------|
| 1 | SERVICE INLET VALVE 06-FV-201-X |
| 2 | SERVICE OUTLET VALVE 06-FV-202-X |
| 3 | BACKWASH INLET VALVE 06-FV-203-X |
| 4 | BACKWASH OUTLET VALVE 06-FV-204-X |
| 5 | RINSE OUTLET VALVE 06-FV-205-X |

| FILTER FUNCTION | VALVES OPEN |
|-----------------|--------------------------|
| SERVICE | 06-FV-201-X, 06-FV-202-X |
| BACKWASH | 06-FV-203-X, 06-FV-204-X |
| SETTLE | --- |
| RINSE | 06-FV-201-X, 06-FV-205-X |



1. CONNECTION TABLE

| ITEM | DESCRIPTION | TYPE | SIZE |
|------|------------------------------|-------------|-------|
| (A) | SERVICE INLET | 150# RF FLG | 3.00" |
| (B) | SERVICE OUTLET | 150# RF FLG | 3.00" |
| (C) | BACKWASH/RINSE OUTLET | 150# RF FLG | 3.00" |
| (D) | MEDIA REMOVAL PORT | FNPT | 2.00" |
| (E) | TANK DRAIN | FNPT | 2.00" |
| (F) | STEAM INLET | FNPT | 2.00" |
| (G) | STEAM VENT | FNPT | 1.00" |
| (H) | TANK VENT | FNPT | 1.00" |
| (I) | CONDENSATE OUTLET | FNPT | 0.75" |
| (J) | AIR INLET (80PSIG MIN. REQ.) | FNPT | 0.25" |
| (K) | SAMPLE VALVE | HSB | 0.25" |
| (L) | TO DRAIN | 150# RF FLG | 3.00" |
| (M) | CIP FEED | 150# RF FLG | 2.00" |
| (N) | RELIEF | FNPT | 1.00" |

NOTES:

- SHIPPING WEIGHT - 8300 LBS/[3760 Kg].
- OPERATING WEIGHT - 28600 LBS/[12970 Kg].
- EQUIPMENT & PLUMBING TABLE:

| FIND NO. | PART NUMBER | QTY. | DESCRIPTION | U/M |
|----------|---------------|------|---|-----|
| 1 | 1119181 | 1 | LABEL,MOD,S/N,MFD BY GE POWER&WATER | EA |
| 2 | 1159796 | 1 | LABEL,OSMO,MADE IN USA | EA |
| 3 | 1203970 | 2 | PLMB,TEMP IND,AC,316,0.75 | EA |
| 4 | 1203972 | 1 | PLMB,DRAIN,AC,316,0.75 | EA |
| 5 | 1203976 | 1 | PLMB,LATERAL/DROP AC-72,316 | EA |
| 6 | 1204132 | 1 | WELL,TEMP PROBE,316,0.75"FT,24"LN | EA |
| 7 | 1226380 | 2 | PLMB,MEDIA SAMPLE,AC,25,316,LTC,WEST | EA |
| 8 | 4311344B-001 | 1 | TRANS-TEMP,0-300F,4-20MA | EA |
| 9 | 500855F-EE-01 | 1 | ENCL ASSY,AC,24VOLT JUNCTION BOX | EA |
| 10 | 500855F-MQ-01 | 1 | VESSEL,AC,316SS,72" DIA X 120"SS,100,ASME | EA |
| 11 | 500855F-PP-01 | 1 | PLMB,FACE,316,3.0,AC-72 | EA |
| 12 | 500855F-PP-02 | 1 | PLMB,LOWER,316,3.0,AC-72 | EA |
| 13 | 500855F-PP-03 | 1 | PLMB,VENT/RELIEF,AC,316,1.00 | EA |
| 14 | 500855F-PP-04 | 1 | PLMB,UPPER ASSY,316,3.0,AC-72 X 120 | EA |

- ALL PIPING & EQUIPMENT SHOWN TO BE FULLY SUPPORTED BY GE W&PT PRODUCTION.
- ALL INTERCONNECTING PIPING SHALL BE FULLY & INDEPENDENTLY SUPPORTED BY OTHERS.
- GE WATER PRODUCTION TO PROVIDE PVC BLIND FLANGES AND PLUGS TO ALL OPENINGS.
- ALL DIMENSIONS IN INCHES [MM].
- REFERENCE - PIPING AND INSTRUMENTATION DIAGRAM: 500855F-AP-01.

| REV | DESCRIPTION | ECO | DWN | APVD | DATE | CHKD | TOLERANCES UNLESS NOTED | DRAWN BY | DATE |
|-----|-----------------|-----|-----|------|---------|------|---|----------|------|
| A | INITIAL RELEASE | - | PFM | JQD | 1/02/14 | SSS | DECIMALS ± 0.5 XX ± ± 0.50 XXX ± ± 2" | 03DEC13 | |

GE Water & Process Technologies
 GLOBAL HEADQUARTERS : TREVOSE, PA USA +1-215-355-3300 WWW.GEWATER.COM

THIS DRAWING, THE DESIGN AND THE PATENTS IT COVERS, IS THE PROPERTY OF GENERAL ELECTRIC COMPANY AND ITS AFFILIATES AND THE INFORMATION CONTAINED HEREIN IS PROPRIETARY INFORMATION WHICH IS NOT TO BE DISCLOSED TO ANYONE WITHOUT PRIOR WRITTEN CONSENT OF SAID COMPANY. THIS DRAWING IS TO BE USED EXCLUSIVELY FOR THE PURPOSES EXPRESSLY AUTHORIZED BY GENERAL ELECTRIC COMPANY AND ITS AFFILIATES THROUGH ITS OFFICERS AND QUALIFIED REPRESENTATIVES AND FOR NO OTHER PURPOSE. NEITHER THIS DRAWING NOR ANY PORTION THEREOF SHALL BE REPRODUCED WITHOUT THE PRIOR WRITTEN CONSENT OF SAID COMPANY, AND ANY SUCH REPRODUCTION SHALL BEAR THIS NOTICE.

| CLIENT/JOB | TITLE | SIZE | DRAWING NO. | REV |
|------------|------------------------------------|-------|---------------|--------|
| AUTOCAD | GA,FLT-AC,BW,SS, AC-72X120,100 PSI | D | 500855F-PG-01 | A |
| FILE | MATERIAL | SCALE | PROJECT | SHEET |
| | | | 500855 | 1 OF 1 |