

FELDMER

FAX: 828 328 8981

TEL:

Quotation No: 111311R1.doc

CC: John Treadway

CAPACITY: 9000 Gal/hr. (150 GPM) single strength orange juice with pulp to 20 %.

Heating from 60 °F to 190 °F with 85 % regeneration and 198 °F water, hold for 25 sec.,
cool to 80 °F with regeneration and further cool to 35 °F with 32 °F ice water.

UNIT CONSISTS OF: Hold Tube @ 15' @ 4"

- 10 - Triple Tubes 3" x 2½" x 2" heating x 22'-6" OL
- 50 - Triple Tubes 3" x 2½" x 2" regenerating x 22'-6" OL
- 30 - Triple Tubes 3" x 2½" x 2" cooling x 22'-6" OL
- 1 - 4" hold tube pitched ¼"/ft 25 sec.

3.75 ft/sec

- Stainless steel tube racks and stainless steel floor stand
- Pressure drop through raw regenerator 14 psi
- " " " heater 11 psi
- " " " holder 2 psi
- " " " pasteurized regenerator 54 psi
- " " " cooler 35 psi
- Hot water required 330 GPM @ 13 psi
- Ice water required 330 GPM @ 39 psi
- All tubes pitched for free draining

TERMS AND CONDITIONS OF SALE

1. The SELLER agrees to sell and the BUYER agrees to purchase the goods and materials as set forth in the above "QUOTATION".
2. The price and terms of payment shall be as stated in the above "QUOTATION".
3. All risks of loss shall pass to BUYER upon delivery to carrier.
4. All terms and conditions in any contract or transaction arising therefrom shall be governed by the Uniform Commercial Code as enacted in the State of New York.
5. Any transaction arising here from shall be governed by the rules of law and constructions applicable to transactions between merchants.
6. Cancellations, of orders placed with and accepted by the SELLER, can be made only with the SELLER'S written consent. Upon request to cancel, the SELLER will advise amount of cancellation charges, in addition to charges for dies, work in process, products produced, including machine work, etc. and all liability for raw materials. Should the BUYER change its material specification for its order after the SELLER has ordered or received the material, the BUYER is to assume all liability for the material covered by its initial specification.

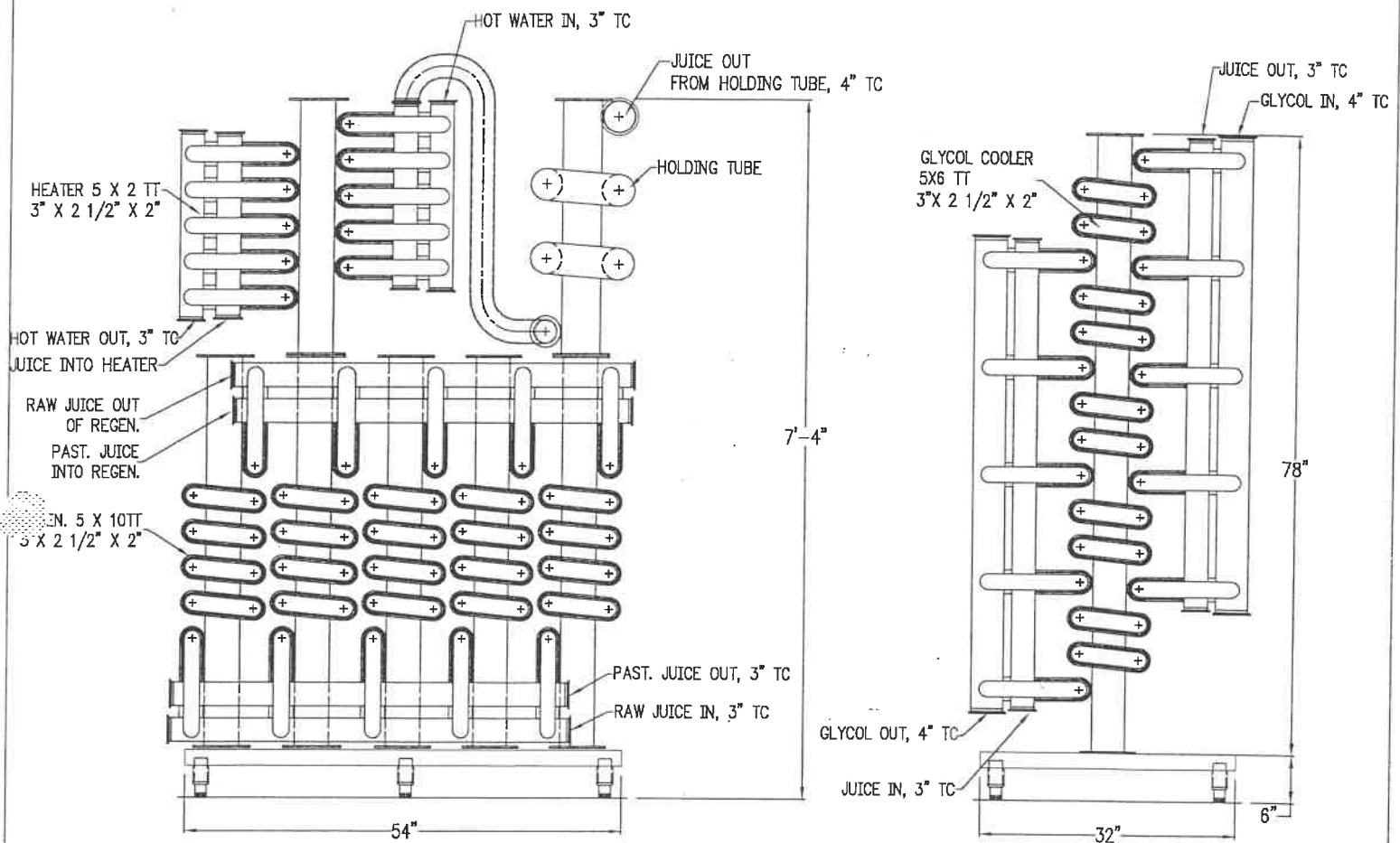
This proposal (quotation) does not include any federal, state, city or local manufacturer's excise, sales or use taxes (unless otherwise indicated herein) and all such taxes now in effect, or which may hereafter be imposed, shall be added to the contract price and shall be paid for by the purchaser.

We cannot be responsible for delays occasioned by Government restrictions, priority controls of materials, or by strikes, floods, inability of carriers, or other causes beyond our control.

All shipments F.O.B. Factory or point of origin...unless otherwise noted.

THIS PROPOSAL (QUOTATION) IS SUBJECT TO ACCEPTANCE WITHIN 30 DAYS

RECEIVED TIMENOV. 15. 9:33AM



FRONT VIEW

PRESSURE DROPS:

THROUGH RAW REGENERATOR	14 PSI
THROUGH HEATER	11 PSI
THROUGH HOLDER	2 PSI
THROUGH PAST. REGENERATOR	54 PSI
THROUGH COOLER	35 PSI

CIP FLOW @ 150 GPM:

7"/SEC THROUGH HEATER, PAST. REGEN AND COOLER
 3.5"/SEC THROUGH RAW REGEN
 4"/SEC THROUGH HOLDING TUBE

ADDED PD AND CIP INFORMATION - 11-07-02

OWN BY:	REV	<i>FELDMIEIER EQUIPMENT</i> Syracuse, New York	P.O. No.
DATE 11-05-01	SHEET: of		FILE NAME: \DWGS\ S411a01
PASTEURIZER FOR JUICE WITH PULP 150 GPM			
M. G. NEWELL (FOR			DRAWING NO. ? S411-01