

We Build The Best Machines In The Industry –  
period.

**SQ26367-Rev01**

## **QUOTATION**

**This quote is personalized for:**

### **WRT-200 (14 Machines)**

**COMPETITIVELY PRICED SEMI-AUTOMATIC 4-LEG DESIGNED  
FLOOR MOUNTED ROTARY ARM**



Thank you for your interest in Wulftec / MJ Maillis Group quality stretchwrapping solutions. Over the years, Wulftec's rugged machine design has set the standard for the stretchwrap industry.

We propose the WRT-200 model, a semi-automatic 4-leg designed, floor mounted rotary unit as the ideal stretch wrapping solution for your unique needs. Expect to improve productivity, operator efficiency while reducing film and labor costs.

Our budget quotation includes the following information:

<b>Section 1</b>	<b>The Wulftec Advantage</b>
<b>Section 2</b>	<b>Features &amp; Benefits</b>
<b>Section 3</b>	<b>Standard Specifications</b>
<b>Section 4</b>	<b>Your System's Description and Prices</b>
<b>Section 5</b>	<b>Safety Requirement</b>
<b>Section 6</b>	<b>Options</b>
<b>Section 7</b>	<b>Description of control panels</b>
<b>Pages 18-22</b>	<b>Atlantic Summary + Terms &amp; Conditions</b>
<b>Section 9</b>	<b>Wulftec Warranty</b>
<b>Section 10</b>	<b>Performance Guarantee</b>
<b>Section 11</b>	<b>Corporate Profile</b>

We thank you for this opportunity to quote on your project and we look forward to satisfying your stretch wrapping needs & requirements. If any question arises concerning this document, please feel free to contact us and we will be pleased to provide additional information.

Best regards,

## SECTION 1

### THE WULFTEC ADVANTAGE

#### **Wulftec Stretchwrappers Give You The Most Value For Your Money**

As a distributor or end-user, it's important to compare what's available before choosing your equipment provider.

It's also important to get the best value for your investment. Why save a few bucks on a stretchwrapper if it can't handle the workload? A stretchwrapper that constantly breaks down can't guarantee a secure wrap, and it certainly won't help you ship products on time.

When it comes to strength and flawless performance, no other manufacturer can compare to Wulftec. That's because only Wulftec stretchwrappers are backed by the Wulftec Advantage. Just ask any end-user who relies on a Wulftec stretchwrapper to keep end-of-line production rates at maximum efficiency: You simply can't get better value for your money.

#### UNIQUE TO WULFTEC

##### **All-steel structures**

Wulftec is the only manufacturer of stretchwrap equipment that attaches a significant importance to strength. We don't want you calling in five years to tell us that the structure has been compromised—for whatever reason. All Wulftec structures are built with heavy-duty steel for rugged performance, in even the harshest work environments. *They're built strong to last forever.*

##### **AC variable frequency drives**

Wulftec was the first in North America to put AC variable frequency drives as standard equipment on all machines. Why? Lower maintenance and better reliability—Wulftec stretchwrappers will save you time and money.

##### **Pre-Stretch Profitability**

Wulftec's NO-THREAD® Powered Pre-Stretch carriage allows film to be stretched up to 400% for optimal film use and reduced costs—without compromising wrap strength and consistency. Our carriage is a real NO-THREAD for your operator's safety.

##### **Warranties**



Wulftec is the only manufacturer to offer a LIFETIME warranty on its pre-stretch rollers' blue compound. Plus, all Wulftec semi-automatic rotary arm stretch wrappers feature a **4-year unlimited cycle warranty and 10-years on the steel structure & ring gear.**

##### **Non-proprietary parts**

Wulftec is one of the few manufacturers to offer the convenience of non-proprietary parts throughout, which means they are easily accessible on a local basis.

## SECTION 1 -- CONTINUED

### THE WULFTEC ADVANTAGE

#### Technical Support

**The industry's best-built products...  
...backed by superior customer service**

We won't settle for anything less than 100% customer service—no matter what your needs are or where you are located.

Behind every Wulftec product, you benefit from:

- Experienced sales representatives and distributors
- A highly-trained customer service team
- Technicians who offer on-site service and additional internal support
- A dedicated individual to handle customer requests and technician scheduling
- An entire organization that puts customer service front and center!



**To serve you better, Wulftec has:**

- A Wulftec school where distributors are trained on each piece of machinery. Training include: servicing, installation and start-up, programming.
- Inventory throughout the world to support after-sales service
- Strategic parts depot programs in the United States and Canada
- A strong network of qualified distributor partners positioned close to our customers
- Attentive customer service
- Toll-free 1-877-WULFTEC (1-877-985-3832) or (819) 838-4232
- After hours technical assistance for emergencies

#### Technical Expertise



- Dedicated employees recruited from high-tech schools and universities
- Solution-oriented engineers who are ready to tackle any packaging challenge.
- Engineering team constantly creating new designs and improvements to meet customer needs
- Investment of time and money for ongoing research



## SECTION 2

### FEATURES & BENEFITS

#### WRT-200

Over the last several years, Wulftec's rugged machine design has set the standard for the stretch wrap industry. We are confident that this offer will meet your requirements as far as performance, durability, safety, and affordability are concerned.

The proposed model incorporates many standard features including:

- ☑ NEMA 4/12 control panel dust tight and waterproof
- ☑ The control panel is UL508A approved
- ☑ 100% Structural Steel Construction
- ☑ Superior Electrical/Electronic Design including Allen Bradley MicroLogix PLC and AC drives
- ☑ Wulftec's exclusive 20" NO-THREAD® Powered Pre-Stretch Carriage (30" optional)
- ☑ Easily available non-proprietary parts
- ☑ State-of-the-art electrical control panel with all finger safe electrical components
- ☑ Superior driving mechanism with heavy duty ring gear with pinion gear drive
- ☑ Angled carriage to wrap approximately 2" above floor level
- ☑ Emergency stop sensor for arm path obstruction

Some of the standard features are listed below:

#### CARRIAGE



No Cut Pre Stretch Roller Covering

NO-THREAD® 20" Powered Pre-Stretch film delivery system. Designed with safety in mind, no film threading is required and a Lexan cover eliminates operator's ability to reach rollers when gate is closed. Our linear device compensates for corners to provide even film tension on the load. The "Maintenance Free" spring loaded carriage gate equipped with spring loaded rollers, ensures optimal contact with the stretch film year after year, without involving maintenance. Preset pre-stretch ratios are available ranging from 50-400%, std is 200%.

Angled carriage to wrap approximately 2" above floor level.

## SECTION 2 -- CONTINUED

### FEATURES & BENEFITS

#### WRT-200

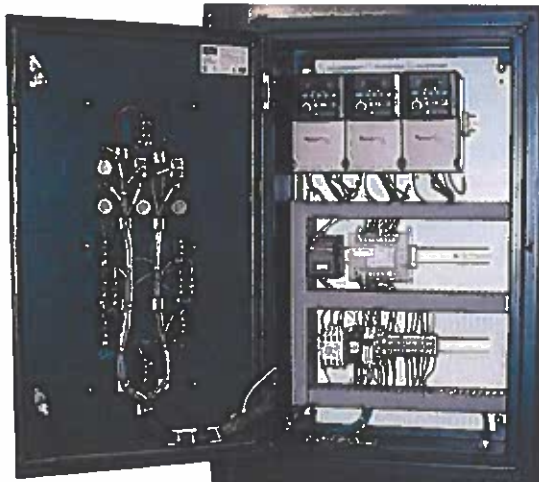
##### ALLEN BRADLEY AC VARIABLE FREQUENCY DRIVES

The WRT-200 is equipped with Allen Bradley Powerflex 4 drives for lower maintenance and better reliability.



- 1) AC motors do not require periodic inspection and replacement of brushes as required on DC motors.
- 2) Allow soft start/stop for smooth operation.
- 3) AC drives include a digital read-out, which allows monitoring of speed, current and voltage. Thus, fine tuning is made easier and more reliable compared to DC drive trim pots.
- 4) AC drives include internal diagnosis, alarm and power surge protection.
- 5) AC drives power components are enclosed inside a drive case, thus providing service personnel safer access inside the control panel.

##### NEMA 12 CONTROL CABINET



##### Operating Controls

- Allen Bradley MicroLogix 1200 PLC
- Sick autoheight Photoeyes
- 24V Control System
- Power on/off switch and indicator light
- Current overload protection
- Reset function
- Emergency stop button
- 230VAC/3PH/60HZ Motors and Allen Bradley Power Flex 4 Variable Frequency Drives

## SECTION 3

### STANDARD SPECIFICATIONS

#### WRT-200

PRODUCTION RATE	<ul style="list-style-type: none"> <li>Up to 50 loads per hour based on load size, configuration and machine options.</li> </ul>
MACHINE DIMENSIONS	<ul style="list-style-type: none"> <li>130" W x 141 ½" L x 117 ½" H – Based on 80" wrap height (Overall dimension of system in operation)</li> </ul>
LOAD SIZE	<ul style="list-style-type: none"> <li>56" W x 56" L x 80" H (80" diagonal) – other wrap heights available</li> </ul>
LOAD WEIGHT	<ul style="list-style-type: none"> <li>Unlimited</li> </ul>
APPROXIMATE SHIPPING WEIGHT	<ul style="list-style-type: none"> <li>2,450 lbs.</li> </ul>
ELECTRICAL REQUIREMENTS	<ul style="list-style-type: none"> <li>120V/1/60 15A</li> </ul>
CONTROLS  (REFER TO "DESCRIPTION OF CONTROL PANEL" PAGE )	<ul style="list-style-type: none"> <li>Allen Bradley MicroLogix 1200 PLC</li> <li>24V control system</li> <li>Current overload protection</li> <li>NEMA 4/12 control cabinet (can be located up to 10' from machine frame)</li> <li>Autoheight sensing photoeye</li> <li>Power on/off switch and status light</li> <li>Start/stop push button</li> <li>Large emergency stop (push pull type)</li> <li>Manual carriage up/down function</li> <li>Variable rotary arm speed (12RPM)</li> <li>Separate up and down carriage speeds</li> <li>Separate top and bottom wrap selectors</li> <li>Reinforced wrap/manual rotation control</li> <li>Positive arm alignment controlled by proximity sensor</li> <li>Top cover pause switch (Splash proof program)</li> <li>Spiral up or spiral up/down switch</li> <li>Film force to load control</li> <li>Emergency stop sensor for arm path obstruction</li> <li>Lack of film alarm</li> </ul>
STRUCTURE	<ul style="list-style-type: none"> <li>Heavy duty structural steel construction</li> <li>Free standing integrated leg design</li> <li>Four (4) 6" x 6" floor mounting legs</li> <li>Easy access to all components</li> </ul>
ANCHORING REQUIREMENTS	<ul style="list-style-type: none"> <li>Wulftec recommends using heavy-duty expansion shields of ¾" diameter thread size with a minimum anchor depth of 4" in concrete.</li> </ul>

## SECTION 3 -- CONTINUED

### STANDARD SPECIFICATIONS

#### WRT-200

FILM DELIVERY SYSTEM	<ul style="list-style-type: none"><li>• 20" NO-THREAD® Powered Pre-Stretch Carriage</li><li>• 1 HP AC motor with Allen Bradley variable frequency drive</li><li>• Lifetime warranty on pre-stretch rollers blue compound</li><li>• Film force release for easy pull at start and end of cycle</li><li>• 50-400% pre-stretch ratio (preset to customer spec, Std 200%)</li><li>• Electronic film tension control with analog sensor</li><li>• Lexan roller cover for operator safety</li><li>• Angled carriage to wrap approximately 2" from floor level</li><li>• Proximity sensor on carriage gate to ensure gate is properly closed</li></ul>
FILM CARRIAGE DRIVE	<ul style="list-style-type: none"><li>• 1 HP AC motor with Allen Bradley variable frequency drive</li><li>• Two #50 carriage lifting chains</li><li>• Dual ½" CRS ways with UHMW-PE carriage glides</li><li>• Dual structural steel supporting boom</li><li>• Power track for efficient guiding of wires</li></ul>
ROTARY ARM DRIVE	<ul style="list-style-type: none"><li>• Heavy duty 25" ring gear with pinion gear drive</li><li>• 1 HP AC motor with Allen Bradley variable frequency drive</li><li>• 0-12 RPM variable speed</li><li>• Electronic soft start/stop</li><li>• Positive arm alignment controlled by proximity sensor</li><li>• Protection guard over the ring gear</li></ul>
TECHNICAL INFORMATION	<ul style="list-style-type: none"><li>• The machine is provided with a manual including electro/mechanical schematics and drawings, troubleshooting guide &amp; Installation instructions</li></ul>

For machines shipped outside continental USA and Canada, consult Factory.

**\*\*ALL DIMENSIONS THROUGHOUT THIS DOCUMENT ARE NOMINAL DIMENSIONS\*\***



## SECTION 4

### YOUR SYSTEM'S DESCRIPTION & PRICES

#### WRT-200 (14 machine order)

We have designed your system according to the following specifications:

##### Wulftec Maximum Load Sizes

	Diagonal	Length	Width	Height	Weight
Maximum	80"	56"	56"	80"	Unlimited

##### Pricing

WRT-200 – Semi-Automatic 4-leg design, floor mounted Rotary Arm unit			
1.	116" Wrap height		
2.	30" NO-THREAD® powered pre-stretch carriage w/200% pre-stretch ratio with Maintenance Free spring loaded carriage gate		
3.	Control Lockout Lockable Cover over the control panel. The following controls are left accessible for an operator: Power on/off, Start/stop, E-stop, Carriage down/up, Reinforce wrap and manual rotation		
4.	Cold Temperature "A" Package <b>41°F to 32°F (5°C to 0°C)</b> Heater inside enclosure. <b>Note: 20 AMPS required</b>		
5.	Allen Bradley Powerflex 4 AC frequency Drives and Baldor Motors		Included
6.	Control panel including: <ul style="list-style-type: none"> <li>Allen Bradley MicroLogix 1200 PLC</li> <li>Separate Top and bottom wrap selectors 1-9</li> <li>Rotary arm speed adjustment</li> <li>Separate carriage speed adjustment</li> <li>Film tension adjustment</li> <li>Manual mode carriage up/down</li> <li>Autoheight sensing photoeye on/off</li> <li>Reinforced wrap/manual rotation</li> <li>Top cover pause (splash proof program)</li> <li>Spiral up, Spiral up/down mode</li> </ul>		Included
7.	1 x Operational manual (including installation instructions)		Included

If film gage is above 1 mil, please indicate it on purchase order as modifications to the prestretch mechanism are required

**Note:** The above proposal does not include the safety package required to meet OSHA requirement

Refer to Section 5 for information on the safety package required by OSHA

Special Incentives Section- next page.

See page 18 (Atlantic Summary) for 10+ quantity discount.