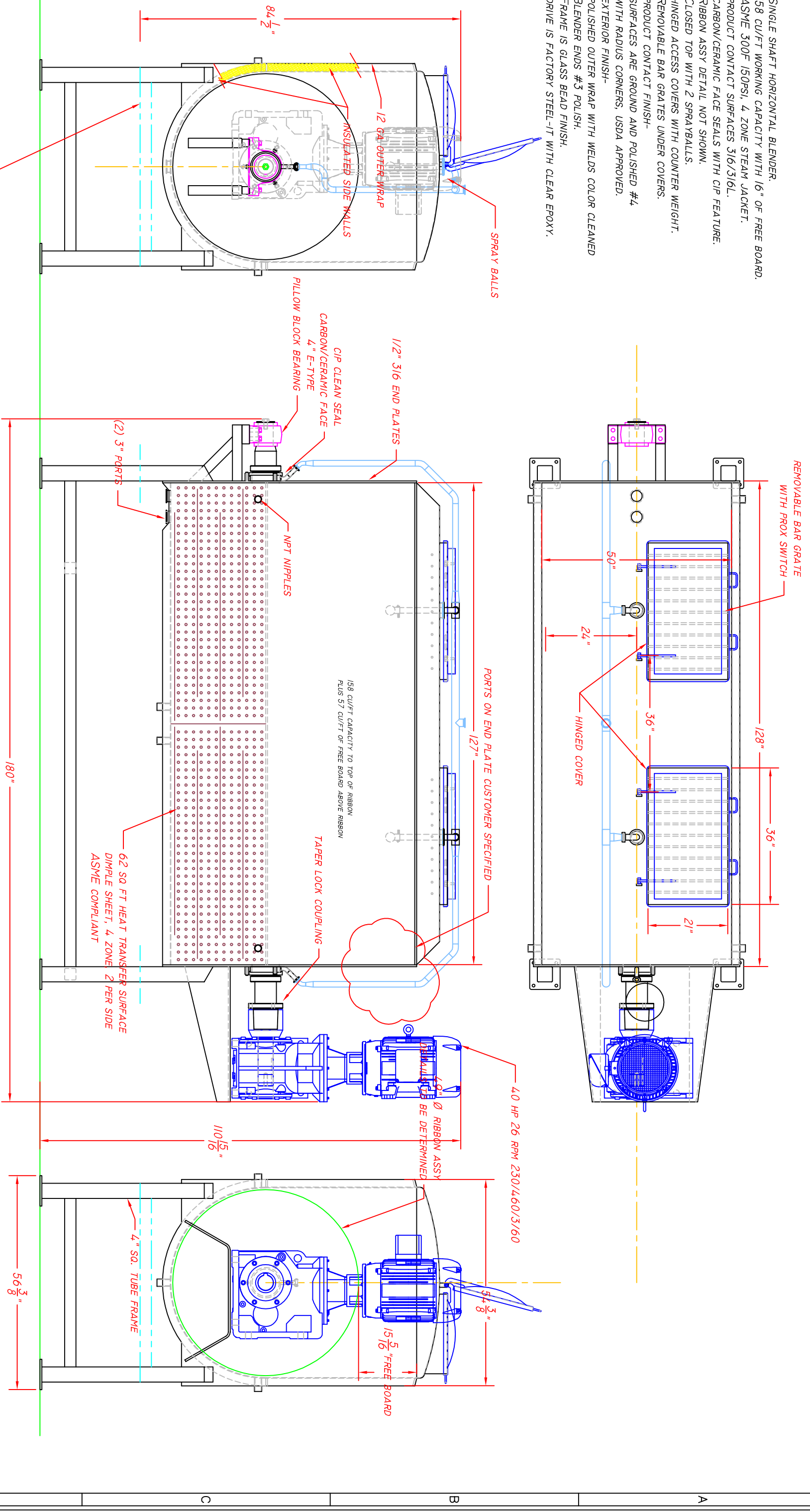


SINGLE SHAFT HORIZONTAL BLENDER.
 158 CU/FT WORKING CAPACITY WITH 16" OF FREE BOARD.
 ASME 300F 150PSI, 4, ZONE STEAM JACKET.
 PRODUCT CONTACT SURFACES 316/316L.
 CARBON/CERAMIC FACE SEALS WITH CIP FEATURE.
 RIBBON ASSY DETAIL NOT SHOWN.
 CLOSED TOP WITH 2 SPRAYBALLS.
 HINGED ACCESS COVERS WITH COUNTER WEIGHT.
 REMOVABLE BAR GRATES UNDER COVERS.
 PRODUCT CONTACT FINISH-
 SURFACES ARE GROUND AND POLISHED #4
 WITH RADIUS CORNERS, USDA APPROVED.
 EXTERIOR FINISH-
 POLISHED OUTER WRAP WITH WELDS COLOR CLEANED
 BLENDER ENDS #3 POLISH.
 FRAME IS GLASS BEAD FINISH.
 DRIVE IS FACTORY STEEL-IT WITH CLEAR EPOXY.



APPROVAL DRAWING ONLY

This drawing and/or its contents, including the design, system design, and location of equipment, system design, and equipment and system specifications as shown are:
 Approved with changes noted. Date _____
 Approved as shown. Date _____
 Not approved. Date _____
 Any changes and resultant evolution and approval of drawings, system design, and equipment shall be indicated on this drawing and end-user acceptance of this drawing will be determined as an agreement to this statement.

This drawing and/or its contents, including the design, system design, and location of equipment, system design, and equipment and system specifications as shown are:
 Approved with changes noted. Date _____
 Approved as shown. Date _____
 Not approved. Date _____
 Any changes and resultant evolution and approval of drawings, system design, and equipment shall be indicated on this drawing and end-user acceptance of this drawing will be determined as an agreement to this statement.

CPR Custom Fabricating & Repair, Inc.
 Marshfield, Wisconsin 54449
 Phone: (715) 387-6598 * Fax: (715) 384-3768

158 cu/ft single ribbon blender
 ASME jacketed lower tub
 316 SS

Engineered By: w kuehl
 Date: 8/22/07
 Scale: NA
 Job #
 Drawing #
 Sales Order Number: 18895-2

Dept- Fabrication
 Rev # 2