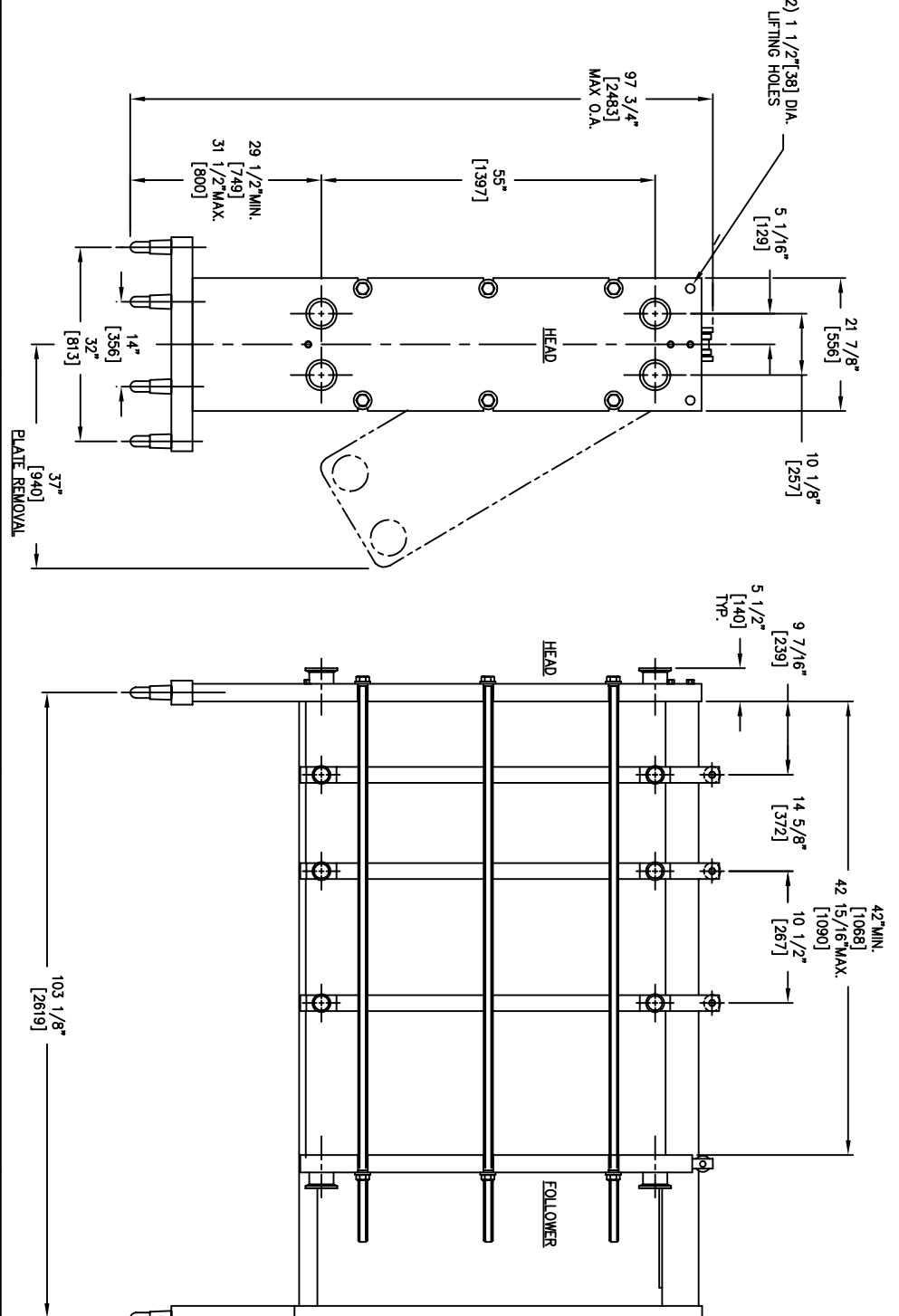


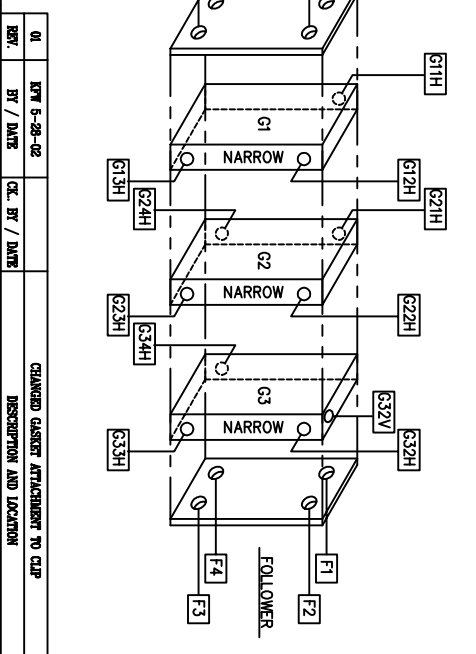
APV
 FACTORY SERVICE
 FOR PARTS AND SERVICE
 CALL OUR CUSTOMER
 SERVICE DEPARTMENT
 1-888-278-4321



PROCESS SPECIFICATION					
SECTION	FLOW RATE (LB./HR)	TEMP. IN (°F)	TEMP. OUT (°F)	ΔP (PSIG)	HEAT LOAD (BTU./HR)
LIQUID					
HEATER					
HOT WATER	115000	230	215.3	4.2	1708849
JUICE	52500	185	220	6.4	
REGEN					
JUICE	52500	220	90	10.8	6347163
RAW JUICE	52500	55	185	11.1	
PRE-COOLER					
JUICE	52500	90	67	8.2	1124474
WATER	50000	55	77.5	7.4	
COOLER					
JUICE	52500	67	50	4.3	828499
GLYCOL	60000	28	42.8	6.6	
DIVERT COOLER					
JUICE	52500	220	180	7.9	1952973
WATER	30000	55	120.2	3.0	

DESIGN SPECIFICATIONS			
DESIGN CODE	APV STANDARD & 3A	MAX. ALLOWABLE WORKING PRESSURE	200 PSIG.
MAXIMUM OPERATING TEMPERATURE	239° F.		
SERIAL NUMBER	20023003000408		
HEAT TRANSFER AREA	744.8 SQ.FT.		
FRAME SIZE	No. 4		
MAXIMUM FRAME CAPACITY	289 PLATES		
DRY WEIGHT	6244 LBS.		
FLOODED (OPERATING) WEIGHT	7073 LBS.		
TOTAL LIQUID VOLUME	99.5 GALS.		
FINISH	#4 POLISH		
ACCESSORIES SUPPLIED	RATCHET WRENCH OPEN END WRENCH		

- NOTES**
- THE INSTALLATION, OPERATION AND MAINTENANCE OF THIS HEAT EXCHANGER SHALL BE IN ACCORDANCE WITH THE APV PARAFLOW PLATE HEAT EXCHANGER INSTRUCTION MANUAL.
 - THIS MODEL HEAT EXCHANGER IS TIGHTENED USING A WRENCH ON THE BAR HEX NUTS AT THE HEAD (RED COVER) END ONLY. CLEAN AND LUBRICATE THE THREADS BEFORE OPENING OR CLOSING USING A LUBRICANT COMPATIBLE WITH STAINLESS STEEL. BOOZ, A.S.P. OR NEVER-SEIZ BLACK MOLY LUBE. DO NOT USE COMMON GREASE.
 - THE PLATE PACK IS TO BE TIGHTENED IN ACCORDANCE WITH THE INSTRUCTION MANUAL SUPPLIED. DO NOT TIGHTEN BELOW THE MINIMUM DIMENSION SHOWN.
 - PROTECTION AGAINST START UP OR OPERATING PRESSURES EXCEEDING THE MAXIMUM ALLOWABLE WORKING PRESSURE.
 - PURGING TO THE FOLLOWER OR CONNECTOR GRIDS THAT ALLOW FOR FREE MOVEMENT WHEN THE UNIT IS OPENED FOR SERVICE AND PROVIDES FLEXIBILITY FOR THE VARIATION OF THE COMPRESSED PLATING DIMENSIONS. DIMENSIONS ARE SHOWN IN INCHES. DIMENSIONS IN BRACKETS [] ARE IN MILLIMETERS.
 - STANDARD TOLERANCES:
FRAME AND BALL FEET LOCATIONS: ±1/4 INCH [6mm]
NOZZLE CENTERLINE AND FACE DIMENSIONS: ±1/8 INCH [3mm]



Qty	Part Number	Position	Description
1	T040NEXA10NA	H1	Port Support TRI-CLAMP
2	T025NEXPHUNA	G1P1,G2P1	HFUN - 2 1/2 in SS 316L TRI-CLAMP
2	T025NEXPHUNA	G2P4,G3P3	HFUN - 2 1/2 in SS 316L TRI-CLAMP
3	T025NEXPHUNA	G1P2,G1P3,G2P2	HFEH - 2 1/2 in SS 316L TRI-CLAMP
2	T025NEXPHUNA	G2P3,G3P4	HFEH - 2 1/2 in SS 316L TRI-CLAMP
1	T040NXXANA	G1P4	XMAN - Solid Boss
1	T040NXXANA	G3P1	XMAN - Through Boss
1	T025NEXPHUNA	G3P2	DDAN - 2 1/2 in SS 316L TRI-CLAMP

Qty	Part Number	Accessory Description
1	T872046	1 1/2" Open End Wrench
1	T872013	1 1/2" Ratchet Wrench

APV Products
 1200 W. Ash Street
 Goldsboro, NC 27530
 Tel: (919) 735-4570/Fax: (919) 581-1134

Invensys
 APV Products

DESCRIPTION: R565SH PLATE HEAT EXCHANGER

Checked: _____ Date: _____
 Supervised: _____ Date: _____

Approved: _____ Date: _____
 Drawn: KFW Date: 5-24-02
 CAD Elec: 0200408

Sheet: 1 OF 1
 Rev: 01
 AUTOCAD REV. 2000